



ELECTROSURGERY

ES-01

EFFICIENT & SECURE



30 WATTS SAFE

Quick

Precise

Safe

Efficient

Notice: For professional dental use only.
Read the instruction in the notice carefully before use.

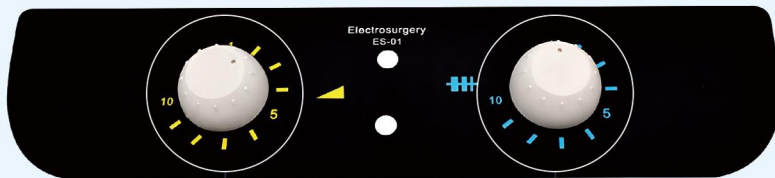


Electrode Holder



Light and autoclavable - Simple-to-mount electrodes.
Electrode is insulated by a sheath.

User-Friendly



Incision

Coagulation

Fast setting up;
Only two potentiometers (incision and coagulation).

Conductive Bracelet

Contact-type neutral bracelet design is preferred according to the latest international standards and dental clinic requirements.

- In direct contact with patient's skin.
- Easy to install to enhance patient acceptance
- Easily disinfected
- Perfect size to avoid concentration of heat

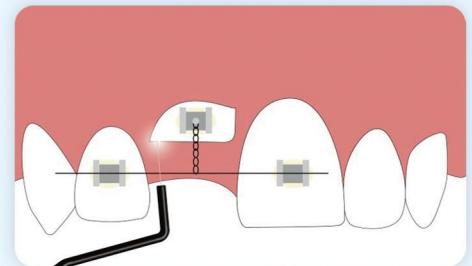
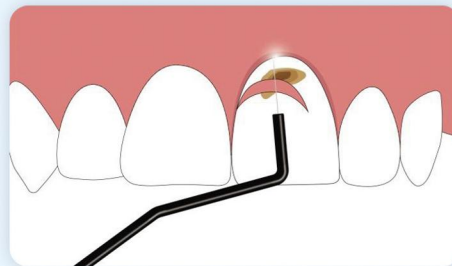
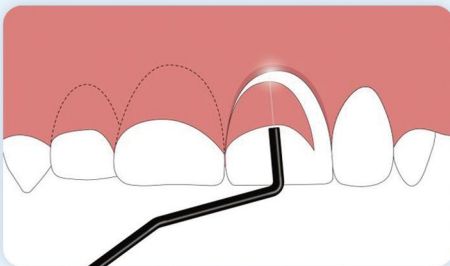
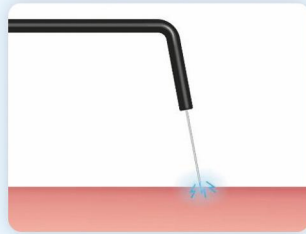
30W is enough for
greater efficiency

Latest circuit design for higher connectivity
efficiency, Less energy loss for stable surgical
experience



Electrodes

7 electrodes classified according to their size and hemostatic capacity. Fast and safe assembly.



Gingivectomy

For extremely precise tracing of the ideal gingival line

Crown lengthening

Control bleeding immediately by incision operation

Exposure of impacted tooth

Expose the impacted tooth for brackets placement

Clinic Application

	SURGICAL APPLICATION	ELECTRODE(S) RECOMMENDED						
		C30S	C30C	EX22R	C40S	C40C	EC10N	EC25B
ORAL SURGERY	Gingival evision	●	●	○	○	○	○	○
	Abscess incision and drainage	●	●	○	●	●	○	○
	Exposure of impacted tooth–operculectomy	●	●	○	○	○	○	○
	Removal of the pericoronal sac	●	●	○	○	○	○	○
	Hemostasis	○	○	○	●	●	●	●
RESTORATIVE DENTISTRY	Dental neck exposure	●	●	○	○	○	○	○
	Exposure of fractured root crown lengthening	●	●	○	●	●	○	○
	Elimination of hypertrophic gingiva	○	○	●	○	●	○	○
	Widening of sulcus	●	●	○	●	●	●	○
	Gingival modelling of edentulous crest	○	○	○	●	●	○	○
ORTHODONTICS	Exposure of impacted tooth	●	●	○	○	○	○	○
	Frenectomy	●	●	○	○	●	○	○
	Crown lengthening for brackets placement	●	●	○	○	●	○	○
	Elimination of hypertrophic gingiva	●	●	●	●	●	○	●
OPERATORY DENTISTRY	Preparation of cavity for inlay before impression	○	○	○	○	●	●	○
	Frenectomy	●	●	○	○	●	○	○
PERIODONTICS	Flap surgery	●	●	○	○	○	○	○
	Gingivectomy	●	●	●	●	●	○	○
	Gingivoplasty	●	●	●	●	●	○	○
	Stripping	●	●	●	●	●	●	●

Electrodes Classification

7 types hyperfine electrodes of different shapes and diameters
Easily break through the surgical operating limits



Accessories

Main Unit	1 unit
Electrode	7 pcs/box
Electrode Holder (with cord)	1 set
Wired Footswitch	1 pc
Power Cable (with grounding)	1 pc
Electrode Holder Silicone Pad	2 pcs
Bracelet (Neutral Electrode)	1 pc
User Manual	1 pc



Packing List

Technical Specifications

Product Name: Electrosurgery Unit
Product Model: ES-01
Main Unit Weight: 1.5kg
Main Unit Dimensions: 23 x 26 x 11cm
Net Weight: 2.0kg

Net Weight: 2.0kg
Gross Weight: 3.0kg
Package Dimensions: 37 x 37 x 17cm
Supply Voltage: 115/230VAC +5% 50/60Hz
Max Power Output: 30W

Senmy Dental Limited

 **Add: Danzao Town, Nanhai District, Foshan City, Guangdong Province, China**

 **Email: info@senmydental.com**

 **Mobile: +86 18937180915**



whatsapp